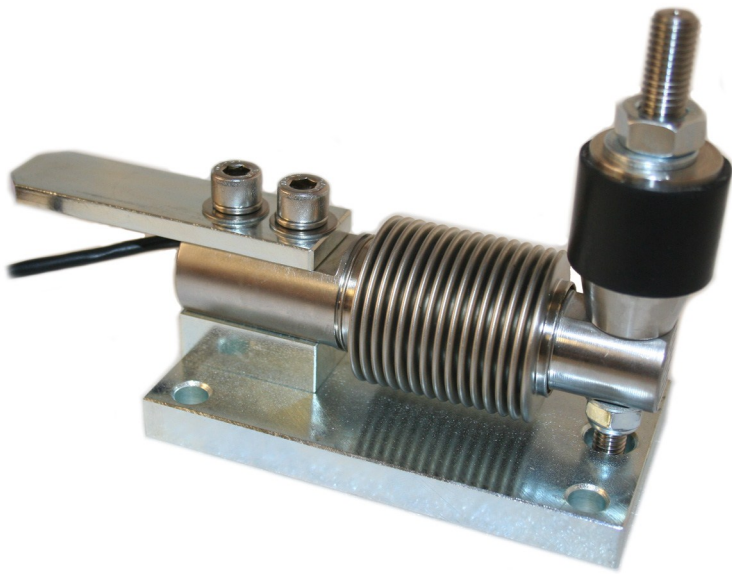
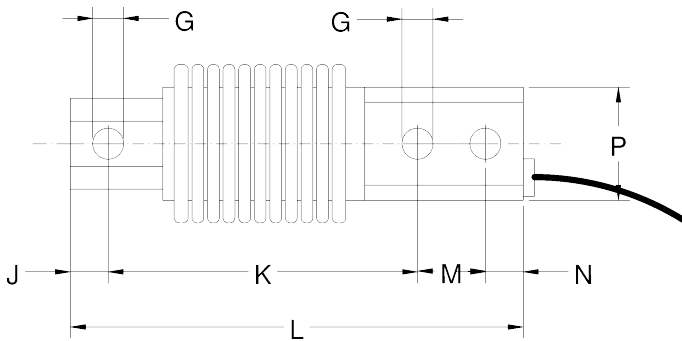
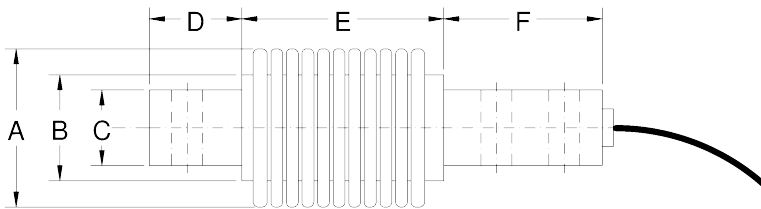


Bellows Bending Beam Stainless Steel



- Hermetically sealed, fully welded construction
- Easy to install
- Ranges 10kg to 200kg
- Atex version available
- Suitable for belt and tank weighing, bag fillers and platforms
- Easy installation

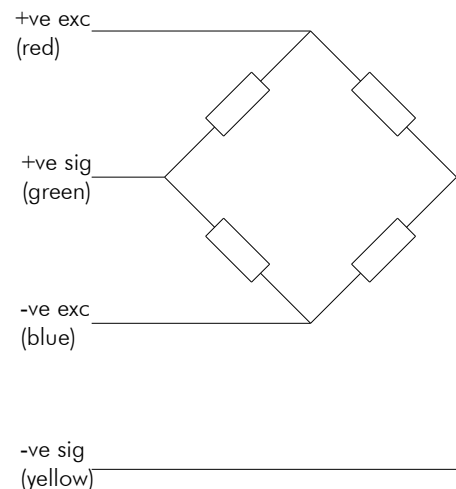


| | | |
|--------------------------|---------------|--------------------|
| Rated output | $2 \pm 0.1\%$ | mV/V |
| Accuracy class | 3000 | n.OIML |
| Combined error | $< \pm 0.017$ | % |
| Non repeatability | $< \pm 0.015$ | % |
| Creep 30 mins | $< \pm 0.016$ | % |
| Temp effect on zero | $< \pm 0.001$ | %/°C |
| Temp effect on span | $< \pm 0.001$ | %/°C |
| Compensated temp range | -10 to +40 | °C |
| Operating temp range | -20 to +60 | °C |
| Safe overload | 150 | % |
| Ultimate overload | 200 | % |
| Zero balance | < 1 | % |
| Input resistance | 400 ± 20 | Ω |
| Output resistance | 350 ± 3 | Ω |
| Insulation resistance | > 5000 | M Ω @100VDC |
| Supply Voltage (nominal) | 10 | V |
| Max Voltage | 15 | V |
| Cable Length | 3 | m |

Specifications subject to change without notice

| Range 10-200Kg | | | | | | |
|----------------|----|----|------|------|----|-----|
| ØA | ØB | C | D | E | F | ØG |
| 42 | 34 | 20 | 24.5 | 53.5 | 42 | 8.2 |
| ØH | J | K | L | M | N | P |
| 27 | 10 | 82 | 120 | 18 | 10 | 30 |

4m screened polyurethane cable
Construction 17/4/PH stainless steel



Elite Transducers Ltd

5&6 Zephyr House, Calleva Park, Aldermaston, Reading, RG7 8JN

Tel: (+44) 0118 9811750 Fax: (+44) 0118 9811751

E-mail: info@elitetransducers.co.uk