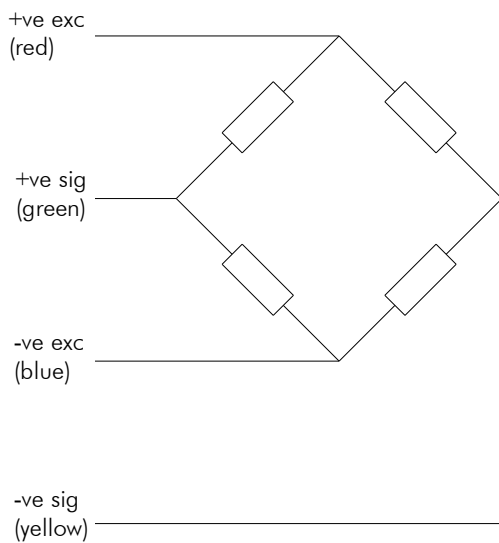


## Bin Lift Cell Single Point



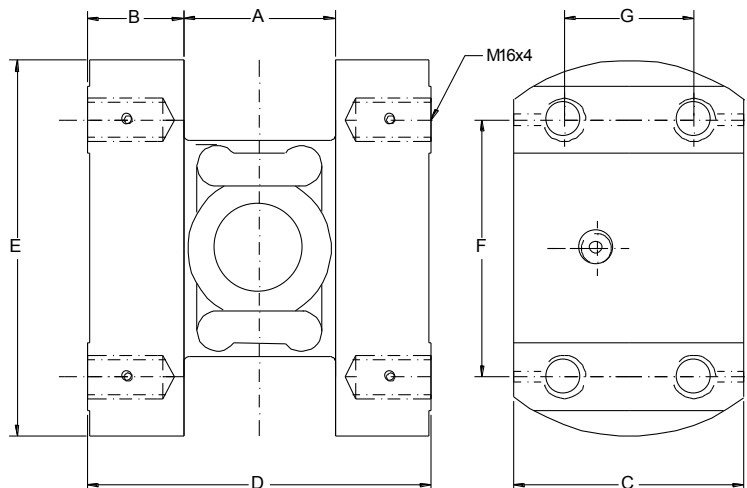
- Welded covers
- 3 year warranty
- Stainless steel
- Easy installation
- Ranges 1000kg to 5000kg
- Excellent dynamic



The Bin Lift Cell range of load cells are approved for commercial weighing to **OIML R60 2000**. The side mounting load cell has been specifically designed for the extremely high fatigue stress and impact loads experienced in onboard vehicle weighing. The fully welded construction of the Bin Lift cell makes it an ideal unit for the hostile environment experienced in applications where durability and high accuracy are of paramount importance.

		<b>DT4650</b>	
Capacity	1,2,5t	1,2,5t	tonne
Accuracy class	0.10%	C3	
Rated output	1.0 ±0.25%	0.88	mV/V
Combined error	0.1	In accordance with OIML Class C3	%FRO
Non-repeatability	0.02		%FRO
Creep (30 mins)	0.03		%FRO
Temp. coef. of zero	0.005		%FRO
Temp. coef. of span	0.002		%FRO
Comp temp. range	-10 to +40		°C
Operating temp. range	-20 to +60	°C	
Safe overload	150	150	%
Ultimate overload	300	300	%
Zero balance	<1	<1	%
Input resistance	380 (±30)	380 (±30)	Ω
Output resistance	350 (±2)	350 (±2)	Ω
Insulation	<5000	<5000	M Ω
Excitation (max)	10 (15)	10 (15)	Volts
Env. protection	IP68	IP68	
4-core screened cable	2	2	Metres

Specifications subject to change without notice



Capacity	A	B	C	D	E	F	G
1, 2, 5te	56	35.5	75	127	139	95	46

All dimensions in mm

### Elite Transducers Ltd

5&6 Zephyr House, Calleva Park, Aldermaston, Reading, RG7 8JN

Tel: (+44) 0118 9811750 Fax: (+44) 0118 9811751

E-mail: info@elitetransducers.co.uk

SELB  
ATEX / IECEx Approved to  
Ex ia IIC T6  
Ex tb IIIC Db T85°C  
(-20°C ≤ T<sub>a</sub> ≤ +60°C)

