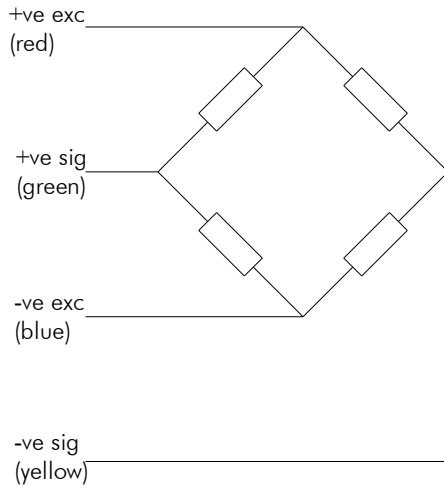


# Button Cell

## 500N to 20kN



- Capacities 500N to 20kN
- Sealed to IP65
- Low Profile
- Very Compact
- Integral Load Button
- Robust Construction

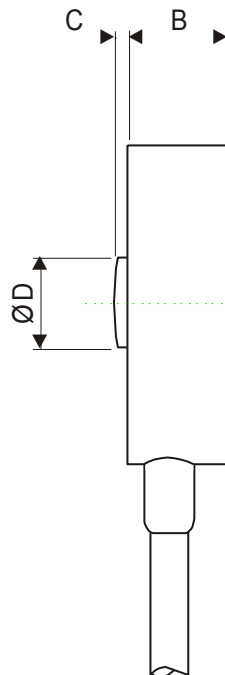
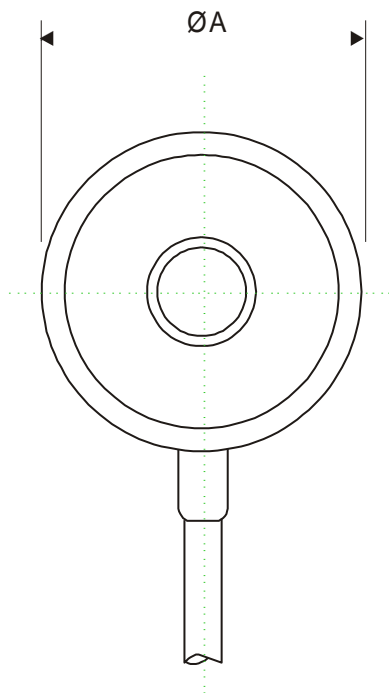


| Capacity (kN) | A  | B  | C   | D |
|---------------|----|----|-----|---|
| 0.5,1,2       | 15 | 7  | 0.5 | 4 |
| 5,10,20       | 30 | 11 | 0.5 | 4 |

All dimensions in mm

|                           |                      |               |
|---------------------------|----------------------|---------------|
| Capacities                | 0.5, 1, 2, 5, 10, 20 | kN            |
| Full Load Output          | 2.0 (±0.25%)         | mV/V          |
| Zero Load Output          | <±2.0                | %             |
| Excitation (Max)          | 10 (15)              | V             |
| Accuracy                  | <0.25                | %             |
| Repeatability             | <0.01                | %             |
| Input Resistance          | 375 (±20)            | Ω             |
| Output Resistance         | 350 (±2)             | Ω             |
| Compensated Temp. Range   | -10 to +40           | °C            |
| Operating Temp. Range     | -20 to +70           | °C            |
| Temp. Coefficient on Zero | <0.0015              | % Capacity/°C |
| Temp Coefficient on Span  | <0.002               | % Capacity/°C |
| Safe Overload             | 150                  | %             |
| Insulation                | >500 @100Vdc         | MΩ            |
| Environmental Protection  | IP65                 |               |
| Cable Length              | 4                    | m             |

Specifications subject to change without notice



Options :

- Non-Standard sizes available
- Other ranges available on request
- Special mounting adaptors available
- Shunt calibration facility
- Different temperature compensation available

### Elite Transducers Ltd

5&6 Zephyr House, Calleva Park, Aldermaston, Reading, RG7 8JN

Tel: (+44) 0118 9811750 Fax: (+44) 0118 9811751

E-mail: [info@elitetransducers.co.uk](mailto:info@elitetransducers.co.uk)