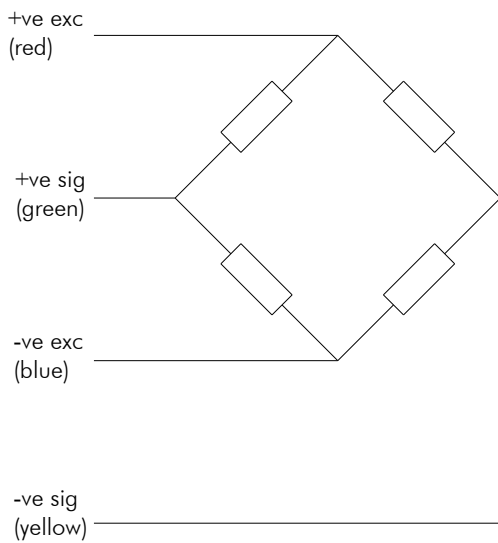


Comp Cell

500kg to 20,000kg



- Low height
- Stainless steel
- Sealed to IP68
- Compression load cell
- Integral load button
- Welded cover



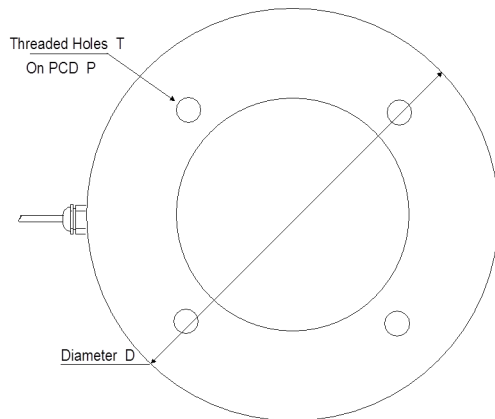
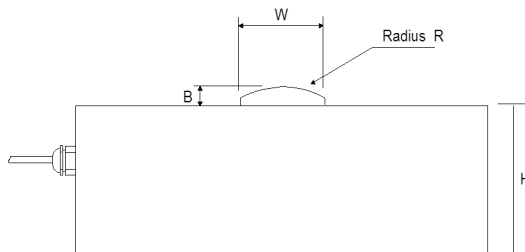
Capacities	0.5,1,2,5,10,20	tonne
Full Load Output	2.0 ($\pm 0.25\%$)	mV/V
Zero Load Output	$< \pm 2.0$	%
Excitation (Max)	10 (15)	V
Accuracy	< 0.25	%
Repeatability	< 0.1	%
Input Resistance	750 (± 20)	Ω
Output Resistance	700 (± 2)	Ω
Compensated Temp. Range	-10 to +40	$^{\circ}\text{C}$
Operating Temp. Range	-20 to +60	$^{\circ}\text{C}$
Temp. Coefficient on Zero	< 0.005	% Capacity/ $^{\circ}\text{C}$
Temp Coefficient on Span	< 0.005	% Capacity/ $^{\circ}\text{C}$
Safe Overload	150	%
Insulation	> 500 @100Vdc	M Ω
Environmental Protection	IP68	
Cable Length	4	m

Specifications subject to change without notice

Capacity (t)	H	B	W	R	D	T	P
0.5, 1	21	4	10	50	59	M3x7	42
2, 5, 10, 20	35	5	20	150	98	M6x18	72

All dimensions in mm

Options :
Atex approved versions.



Elite Transducers Ltd

5&6 Zephyr House, Calleva Park, Aldermaston, Reading, RG7 8JN
 Tel: (+44) 0118 9811750 Fax: (+44) 0118 9811751
 E-mail: info@elitetransducers.co.uk

LPCC
 ATEX / IECEx Approved to
 Ex ia IIC T6
 Ex tb IIIC Db T85 $^{\circ}\text{C}$
 (-20 $^{\circ}\text{C}$ \leq T $_o$ \leq +60 $^{\circ}\text{C}$)

