



Telemetry Series

Underhook/Inline Load Link

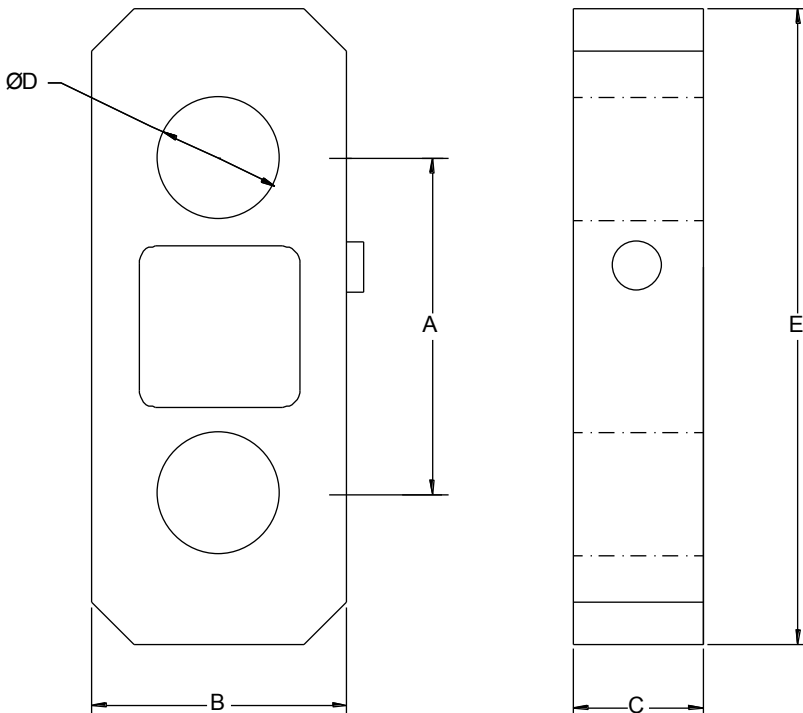
- Range 5 to 250 tonne
- For use with standard shackles
- Sealed to IP67
- Transmission Distance up to 200m
- 10 Step Linearisation
- Auto Power Down

Capacity (te)	A	B	C	DØ	E	Weight (Kg)
5	137	105	41.5	30	193	1.5
12	149	105	41.5	38	239	2.0
25	160	125	55	53	284	4.5
35	175	138	55	60	335	5.5
50	198	150	75	73	375	10.0
100	275	220	120	100	500	28.0
150	300	260	120	110	550	50.0
200	325	290	159	135	660	75.0
250	365	304	189	145	720	90.0

All dimensions in mm

Capacities	5-250	tonne
Radio Frequency	2.4	GHz
Accuracy	±0.05	% of reading
Input Resistance	800	Ω
Output Resistance	700	Ω
Compensated Temp. Range	-10 to +40	°C
Operating Temp. Range	-20 to +60	°C
Temp. Coefficient on Zero	<0.005	% FRO/°C
Temp Coefficient on Span	<0.003	% FRO/°C
Safe Overload	150	%
Ultimate Overload	400	%
Insulation	>500 @100Vdc	MΩ
Environmental Protection	IP67	
Battery Life	200 (up to)	Hrs

Specifications subject to change without notice



Features and Benefits

- Long battery life
- Error free data transmission
- Active repeater to extend transmission range
- Remote on/off
- Environmentally sealed
- Internal aerial
- Other capacities available on request

Elite Transducers Ltd

5&6 Zephyr House, Calleva Park, Aldermaston, Reading, RG7 8JN

Tel: (+44) 0118 9811750 Fax: (+44) 0118 9811751

E-mail: info@elitetransducers.co.uk

Wireless Telemetry Handheld Display Single Input



Wireless telemetry portable display for 1 wireless sensor



User Benefits

- Simple operation
- Connection to single module
- Tare function
- Auto shutdown
- Rugged construction

Ideal Application

- Lifting & Handling
- Theatre & Events
- Construction
- Civil Engineering
- Aerospace
- Automotive

Introduction

The T24-HS handheld display provides one to one data display from any one of Mantracourt's acquisition modules (strain, current, voltage). Input values are transmitted to the handheld via 2.4Ghz radio allowing users to view a digital reading at distances of up to 200 m (650 ft).

The handheld display can power 'off' acquisition modules by a push of a button thereby extending battery life and maintenance costs. If no buttons are pressed on the T24-HS it too will turn off after 5 minutes.

The wide temperature operating range and the robust technology ensures that the module it is not susceptible to harsh physical or electrical environments.

Specification at a Glance

- 8 digit display
- Ability to wirelessly 'power off' the acquisition module
- Two key operation offering tare functionality
- Worldwide licence exempt 2.4 GHz radio
- 120 m (400 ft) range maximum
- Waterproofed to IP65 / NEMA 4 dimensions 90 x 152 x 34 mm

