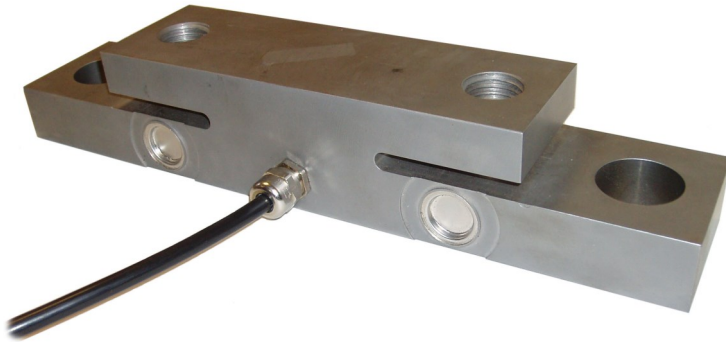
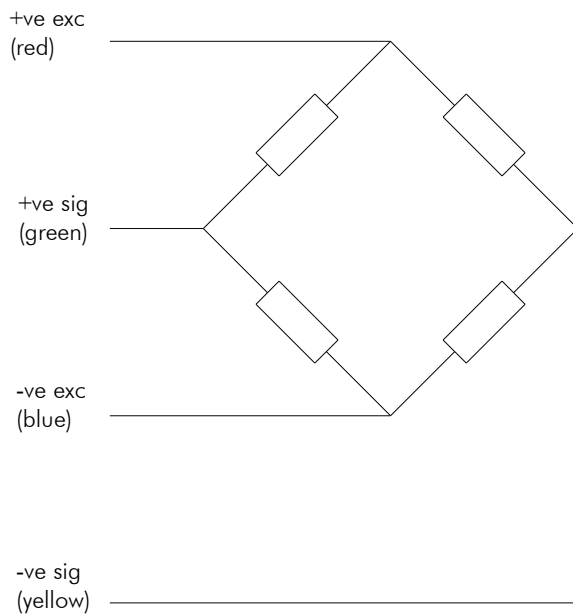


Chassis Mount Cell



- Low height
- Sealed to IP68
- Stainless load cell
- High accuracy



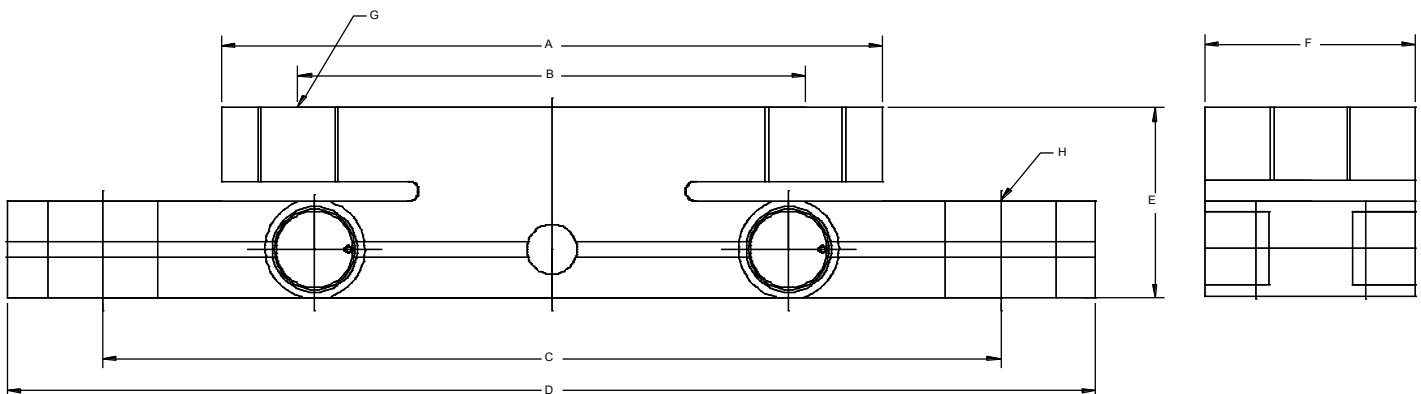
Capacity	A	B	C	D	E	F	G	ØH
10t	198	152	269	326	57	63	M24	33
15t	198	152	269	326	63	63	M24	33

All dimensions in mm

		TYPE CMC	
Capacity	10t, 15t	6t, 9t	tonne
Accuracy class	0.5	C1.5	
Rated output	1.2 ±0.25%	0.72	mV/V
Combined error	0.5	In accordance with OIML Class C1.5	%FRO
Non-repeatability	0.3		%FRO
Creep (30 mins)	0.03		%FRO
Temp. coef. of zero	0.005		%FRO
Temp. coef. of span	0.002		%FRO
Comp temp. range	-10 to +40		°C
Operating temp. range	-20 to +60	°C	
Safe overload	150	200	%
Ultimate overload	200	300	%
Zero balance	<2	<2	%
Input resistance	750 (±30)	750 (±30)	Ω
Output resistance	700 (±2)	700 (±2)	Ω
Insulation	<5000	<5000	M Ω
Excitation (max)	10 (18)	10 (18)	Volts
Env. protection	IP68	IP68	
4-core screened cable	10	10	Metres

Specifications subject to change without notice

Options :
Atex approved versions.
Alternative capacities available on request. Please enquire for details.



Elite Transducers Ltd

5&6 Zephyr House, Calleva Park, Aldermaston, Reading, RG7 8JN

Tel: (+44) 0118 9811750 Fax: (+44) 0118 9811751

E-mail: info@elitetransducers.co.uk

DELB
ATEX / IECEx Approved to
Ex ia IIC T6
Ex tb IIIC Db T85°C
(-40°C ≤ T_a ≤ +60°C)

