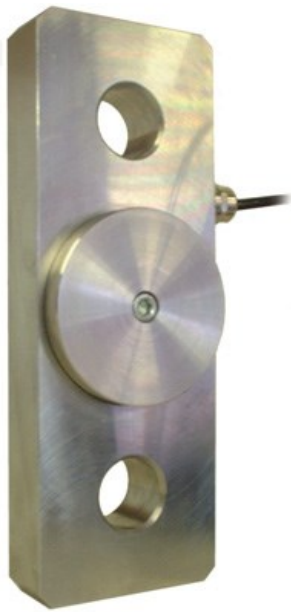


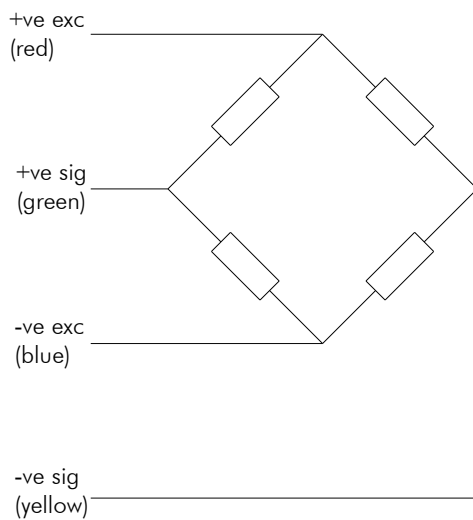
ET Stainless Series

Underhook/Inline Load Link



- Range 1.5 to 150 tonne
- Robust stainless steel construction
- For use with standard shackle
- Sealed to IP68
- Atex certification available

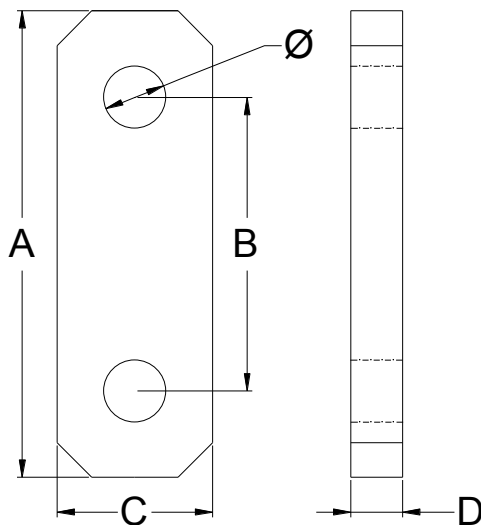
Capacities	1.5, 2.5, 5.0, 7.5, 10.0, 12.5, 15.0, 20.0, 25.0, 150	tonne
Full Load Output	1 (nominal)	mV/V
Zero Load Output	<±2.0	%
Excitation (Max)	10 (15)	V
Accuracy	<0.1	%
Repeatability	<0.05	%
Input Resistance	375 (nominal)	Ω
Output Resistance	350 (nominal)	Ω
Compensated Temp. Range	-10 to +40	°C
Operating Temp. Range	-20 to +60	°C
Temp. Coefficient on Zero	<0.0010	% Capacity/°C
Temp Coefficient on Span	<0.0010	% Capacity/°C
Safe Overload	300	%
Insulation	>500 @100Vdc	MΩ
Environmental Protection	IP68	
Cable Length	10	m



Specifications subject to change without notice

Type	Weight (Kg)	A	B	C	D	Dia.
1.5 te	3	175	110	70	17	16
2.5/5 te	4	185	120	70	25	20/26
7.5 te	6	200	135	75	25	35
10/12.5/15 te	8	270	170	90	30	36/39/43
20/25 te	14	350	220	120	50	52

All dimensions in mm



Options :

- Higher ranges available on request
- Plug / Socket breakdown at link
- Second redundancy gauge bridge
- Internal signal amplifier - 2 or 3 wire
- Witness by Lloyds Reg. Of Shipping, ABS etc.
- Submersible
- ATEX approval
- Internal ATEX Amp - 4-20mA current loop
- Colour code - Supply:Red - Signal:Green
- Carry case for transportation and storage of link available

Elite Transducers Ltd

5&6 Zephyr House, Calleva Park, Aldermaston, Reading, RG7 8JN
 Tel: (+44) 0118 9811750 Fax: (+44) 0118 9811751
 E-mail: info@elitetransducers.co.uk

SLL
 ATEX / IECEx Approved to
 Ex ia IIC T6
 Ex tb III C Db T85°C
 (-40°C ≤ T_a ≤ +60°C)

