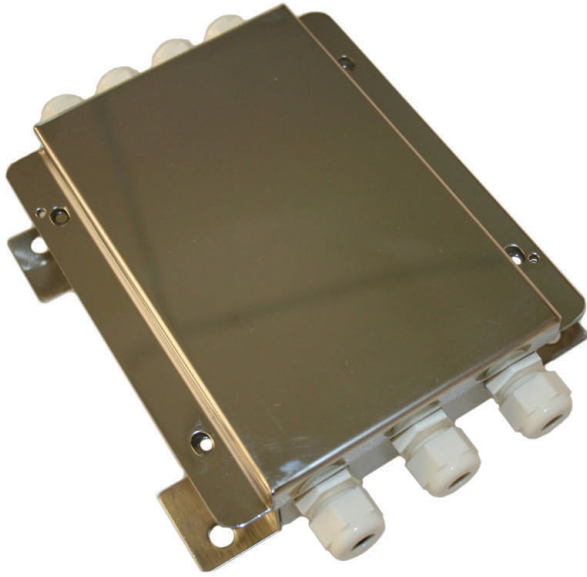


Equalised Junction Box



Stainless steel junction box with IP65 protection from water and dust, and fitted with electronic board for junction and equalisation of four or six load cells. Terminal board with screws for easy connection of the load cells and signal adjustment trimmers for accurate and reliable equalisation.

Technical Features

Stainless steel case

Protection: IP65

Maximum input voltage: 24Vdc

Maximum input current: 700mA

Maximum input load cell signal: 1000mV

Temperature effects: 50ppm/°C

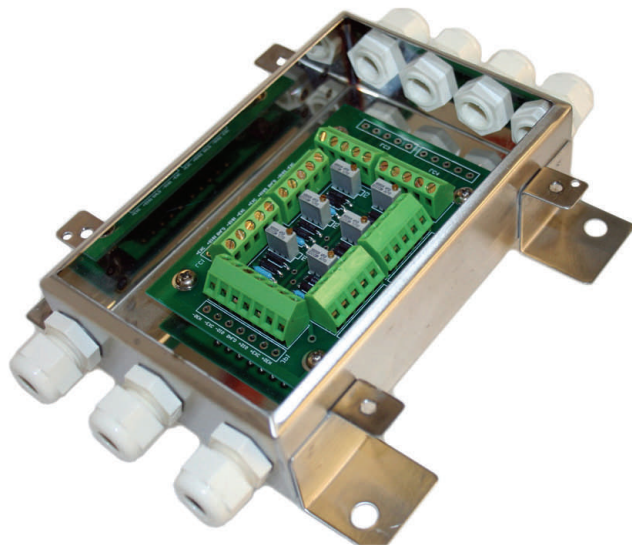
Protection diodes against surges or electrostatic discharges

Inputs on screw connectors or soldering squares

Four cell model dimensions: 155x158x45mm

Six cell model dimensions: 190x132x50mm

Specifications subject to change without notice



Elite Transducers Ltd

5&6 Zephyr House, Calleva Park, Aldermaston, Reading, RG7 8JN

Tel: (+44) 0118 9811750 Fax: (+44) 0118 9811751

E-mail: info@elitetransducers.co.uk