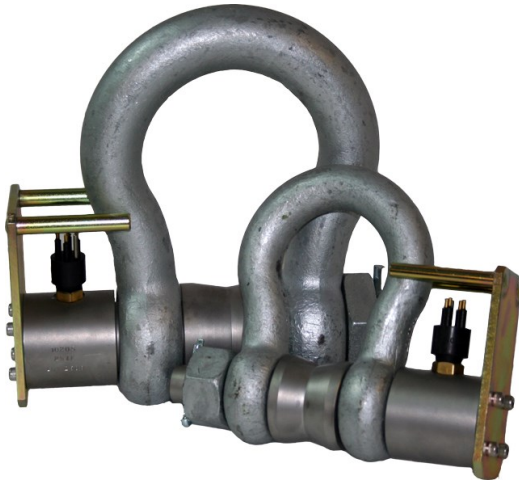
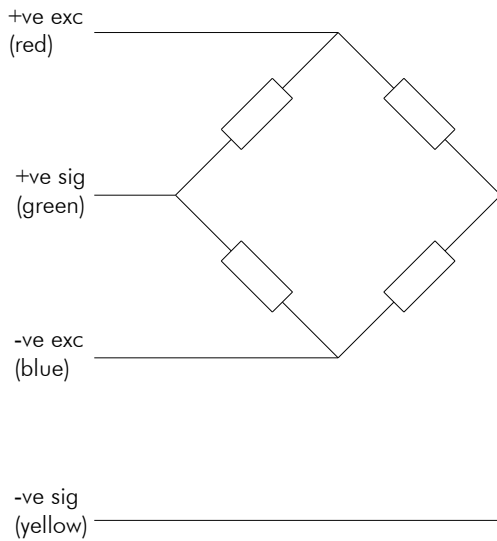


Shackle Pin

High strength marine shackle pin



- Range 6.5te to 250te
- Sealed to IP67
- Stainless Steel
- Ideal for direct swap installation
- Robust construction
- ATEX certification available

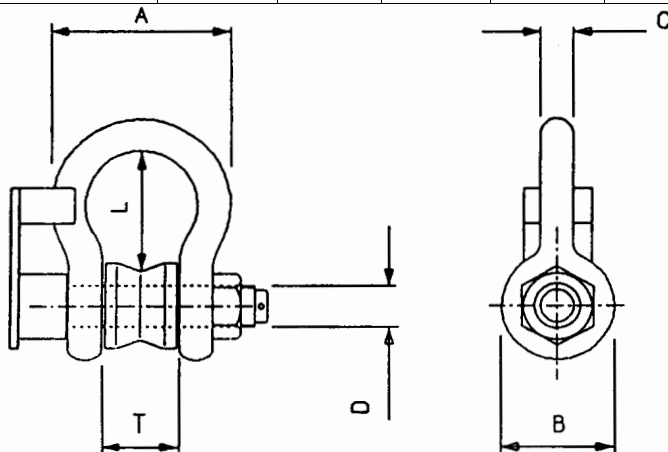


Capacities	6.5 to 500	tonne
Full Load Output	2.0 nom.	mV/V
Zero Load Output	<±2.0	%
Excitation (Max)	10 (15)	V
Accuracy	<0.5	%
Repeatability	<0.10	%
Input Resistance	375 or 745	Ω
Output Resistance	350 or 750	Ω
Compensated Temp. Range	-10 to +40	°C
Operating Temp. Range	-20 to +60	°C
Temp. Coefficient on Zero	<0.005	% Capacity/°C
Temp Coefficient on Span	<0.003	% Capacity/°C
Safe Overload	150	%
Ultimate Overload	400	%
Insulation	>500 @100Vdc	MΩ
Environmental Protection	IP67	
Cable Length	10	m

Capacity (te)	A	B	C	D	L	T
3.25	75	40	16	19	57	27
6.5	100	54	22	25.4	84	38
12	146	76	32	35	119	50
25	216	106	45	50	146	73
35	238	127	51	57	187	83
42.5	287	134	57	65	212	95
55	311	142	68	70	267	105
85	355	163	75	83	309	127
120	420	203	89	95	368	133
150	460	229	100	108	371	140
250	625	305	115	127	475	215

Specifications subject to change without notice

All dimensions in mm



Options :

- Other ranges available on request
- Crosby or Green Pin
- Plug / Socket breakdown at pin
- Second redundancy gauge bridge
- Internal signal amplifier - 2 or 3 wire
- Witness by Lloyds Reg. Of Shipping, ABS etc.
- Fully Welded
- Submersible
- ATEX approval
- Internal ATEX Amp - 4-20mA current loop
- Colour code - Supply:Red - Signal:Green

Elite Transducers Ltd

5&6 Zephyr House, Calleva Park, Aldermaston, Reading, RG7 8JN

Tel: (+44) 0118 9811750 Fax: (+44) 0118 9811751

E-mail: info@elitetransducers.co.uk

DEL P
ATEX / IECEx Approved to
Ex ia IIC T6
Ex tb IIIC Db T85°C
(-40°C ≤ T_a ≤ +60°C)

